



Instrumentation I



instrumentation I
Quick Reference Guide

| | Tip Design | Gauge Size | Pinnacle 360 ^o ™ | D00.01SS (Small) D00.01SL (Large) | Premium | Apex™ |
|----------------|---|--------------------------|---|--------------------------------------|----------------------|-----------|
| ILM | Fine Tip Eckardt Forceps | 23G 25G | 09.10.23PIN 09.10.25PIN | D39.10.23 D39.10.25 | 09.10.23 | 09.10.23A |
| | Eckardt Forceps | 20G 23G 25G 27G | 39.08PIN 39.08.23PIN 39.08.25PIN 39.08.27PIN | D39.08 D39.08.23 D39.08.25 | 39.28.23 39.28.25 | 09.08.25A |
| | Tano Asymmetrical Micro Forceps | 20G 23G 25G 27G | 39.03.23PIN 39.03.25PIN 39.03.27PIN | D09.04 D39.03.23 D39.03.25 | 39.23.23 39.23.25 | 09.03.23A |
| | End Grasping Forceps | 20G 23G 25G | 09.12PIN 09.12.23PIN 09.12.25PIN | | | |
| | Microserrated™ End Grasping Forceps | 23G 25G | 39.12.23PIN 39.12.25PIN | | | |
| | Morris/Witherspoon Fullview ILM Forceps | 20G | | D09.40.20 | | |
| HEAVY MEMBRANE | Pyramid Tip Forceps | 23G 25G | 11.04.23PIN 11.04.25PIN | | | |
| | Serrated Jaw Forceps | 23G 25G | 11.06.23PIN 11.06.25PIN | | | |
| DUAL PURPOSE | Apte Corset Forceps | 23G 25G | 39.07.23PIN 39.07.25PIN | | | |
| | Microserrated™ Tewari Omnicep Forceps | 23G 25G | 39.15.23PIN 39.15.25PIN | D39.15.23 D39.15.25 | | |
| MYOPIC | Fine Tip Eckardt Forceps | 23G 25G | 09.10.23PIN-M 09.10.25PIN-M | | | |
| | Microserrated Tewari Omnicep Forceps | 23G 25G | 39.15.23PIN-M 39.15.25PIN-M | | | |
| FOREIGN BODY | Joseph/Meredith BB Removal | 18G | 11.40PIN | | 11.40 | |
| | Forceps | 19G | 11.20PIN | | 11.20 | |
| | Magnet | 18G | 12.21PIN | | 12.21 | |
| PICK FORCEPS | Ducournau Serrated Forceps | 20G | | D29.02 | | |
| | Pick Forceps | 23G 25G | 09.05.23PIN 09.05.25PIN | | 09.25.25 | 09.05.23A |
| SCISSORS | Horizontal Scissors Curved | 20G 23G 25G | 23.76PIN 23.76.23PIN 23.76.25PIN | D23.76 D23.76.23 D23.76.25 | | |
| | Horizontal Medium Curved | 23G | | | 23.26.23 | 23.06.23A |
| | Morris Vertical Scissors | 20G 23G 25G | 10.24PIN 10.24.23PIN 10.24.25PIN | | 10.24.23 | 10.04.23A |
| | Vertical Scissors | 20G | | | | 10.01A |
| SUBRETINAL | Thomas Horizontal Subretinal Forceps | 20G | | | 39.21 | 09.01A |



Pinnacle 360°™

Disposable

Pinnacle 360° is our line of fully disposable, hand-held retinal surgical instruments. As its name suggests, the Pinnacle 360° product line is at the top of its class in both quality and value. With Pinnacle 360°, surgeons can expect safe, consistent performance on every case.

Pinnacle 360° offers the widest variety of disposable tip options.

Additional benefits include:

- 360° actuation to approach the retina from any angle
- Ergonomic design to reduce fatigue
- Color coded handles for gauge identification

Available in 18ga, 19ga, 20ga, 23ga, 25ga and 27ga



Syntrifugal™ Handle and Disposable (D) Tip

Disposable Tip / Reusable Handle

The Syntrifugal line provides surgeons with the best of both worlds — a reusable titanium handle with a disposable tip. Surgeons enjoy consistent tactile feel with the freedom to choose from a comprehensive selection of disposable tips.

Additional benefits include:

- Large and small handle options
- Handle design that allows the tip to rotate 360°

Disposable tips available in 20ga, 23ga, 25ga and 27ga.

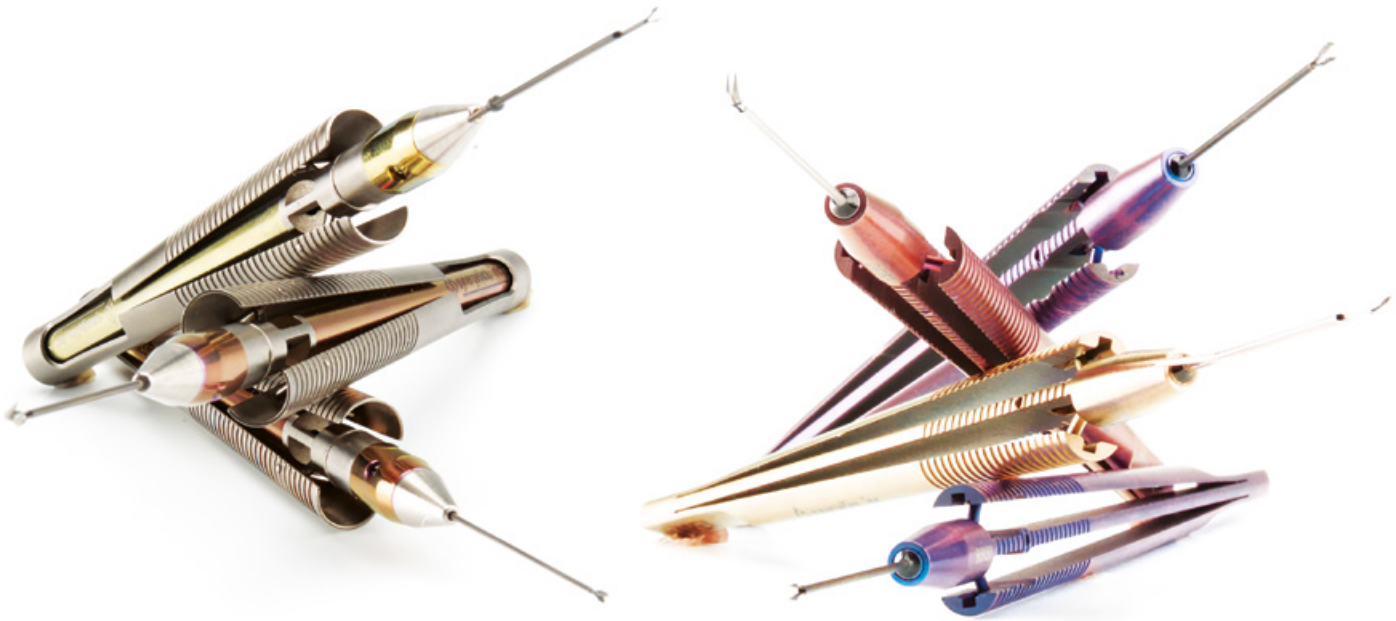


Syntrifugal™ Large Handle:

- D00.01SL
- Each

Syntrifugal™ Small Handle:

- D00.01SS
- Each



Premium Instrumentation

Reusable

Our fully reusable Premium line delivers unparalleled consistency and performance. Surgeons enjoy the familiar comfort and reliability of working with the same superior set of tools on every case.

Additional benefits include:

- Blackened stainless steel tips to reduce glare
- Etched serial numbers for quick and easy identification
- Linear closure
- Microserrations™ offered for select tip styles

Tips available in 18ga, 19ga, 20ga, 23ga and 25ga.

Apex™ Instrumentation

Reusable

Our Apex line is an excellent option for surgeons who prefer the benefits of reusable instrumentation, but at a more conservative price point. Apex instruments provide surgeons with a single-piece titanium handle and access to our comprehensive line of reusable tips at a lower cost than our Premium line.

Additional benefits include:

- Solid, one-piece, titanium handle design
- Etched serial numbers for quick and easy identification
- Linear closure

Tips available in 20ga, 23ga and 25ga.

Large Squeeze Handle

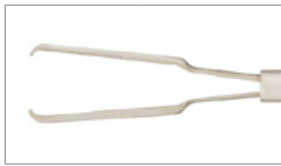
* Standard handle



Apex™ Handle (A)



ILM FORCEPS



Fine Tip Eckardt

- Thinner tip than standard Eckardt provides better view and positioning with similar grasping characteristics
- Available in 23ga and 25ga

| | Pinnacle 360 ^o ™ | Syntrifugal™ | Premium | Apex™ |
|------|-----------------------------|------------------|----------|-----------|
| 23 G | 09.10.23PIN | D39.10.23 | 09.10.23 | 09.10.23A |
| 25 G | 09.10.25PIN | D39.10.25 | | |
| | [STERILE, 5/BOX] | [STERILE, 5/BOX] | [1/BOX] | [1/BOX] |



Eckardt

- Nail-like platforms and microserrations for precise, optimum grasping
- Available in 20ga, 23ga, 25ga and 27ga

| | Pinnacle 360 ^o ™ | Syntrifugal™ | Premium | Apex™ |
|------|-----------------------------|------------------|----------|-----------|
| 20 G | 39.08PIN | D39.08 | | |
| 23 G | 39.08.23PIN | D39.08.23 | 39.28.23 | |
| 25 G | 39.08.25PIN | D39.08.25 | 39.28.25 | 09.08.25A |
| 27 G | 39.08.27PIN | | | |
| | [STERILE, 5/BOX] | [STERILE, 5/BOX] | [1/BOX] | [1/BOX] |



Tano Asymmetrical

- Excellent for fine membranes and more aggressive membranes of diabetic retinopathy
- Available in 20ga, 23ga, 25ga and 27ga

| | Pinnacle 360 ^o ™ | Syntrifugal™ | Premium | Apex™ |
|------|-----------------------------|------------------|----------|-----------|
| 20 G | | D09.04 | | |
| 23 G | 39.03.23PIN | D39.03.23 | 39.23.23 | 09.03.23A |
| 25 G | 39.03.25PIN | D39.03.25 | 39.23.25 | |
| 27 G | 39.03.27PIN | | | |
| | [STERILE, 5/BOX] | [STERILE, 5/BOX] | [1/BOX] | [1/BOX] |



End-Grasping

- Tweezer-like platforms suitable for pinch and peel technique
- Available in 20ga, 23ga and 25ga

| | Pinnacle 360 ^o ™ | Syntrifugal™ | Premium | Apex™ |
|------|-----------------------------|--------------|---------|-------|
| 20 G | 09.12PIN | | | |
| 23 G | 09.12.23PIN | | | |
| 25 G | 09.12.25PIN | | | |
| | [STERILE, 5/BOX] | | | |



Microserrated™ End-Grasping

- Thinner tip than the standard end-grasping provides better view and microserrations™ provide a superior grasping surface
- Available in 23ga and 25ga

| | Pinnacle 360 ^o ™ | Syntrifugal™ | Premium | Apex™ |
|------|-----------------------------|--------------|---------|-------|
| 23 G | 39.12.23PIN | | | |
| 25 G | 39.12.25PIN | | | |
| | [STERILE, 5/BOX] | | | |



Morris/Witherspoon Fullview ILM

- Curved bottom conforms to the epiretinal surface and small cutout offers unobstructed view
- Available in 20ga

| | Pinnacle 360 ^o ™ | Syntrifugal™ | Premium | Apex™ |
|------|-----------------------------|------------------|---------|-------|
| 20 G | | D09.40.20 | | |
| | | [STERILE, 5/BOX] | | |

Instrumentation Instrumentation Instrumentation Instrumentation Instrumentation

HEAVY MEMBRANE FORCEPS



Pyramid Tip

- Pointed tip for fine grasping and a broad base for coarse grasping
- Available in 23ga and 25ga

| | Pinnacle 360 SM | Syntrifugal SM | Premium | Apex SM |
|------|----------------------------|---------------------------|---------|--------------------|
| 23 G | 11.04.23PIN | | | |
| 25 G | 11.04.25PIN | | | |
| | [STERILE, 5/BOX] | [STERILE, 5/BOX] | | |



Serrated Jaw Forceps

- Blunt, atraumatic serrations prevent shredding tissue
- Available in 23ga and 25ga

| | Pinnacle 360 SM | Syntrifugal SM | Premium | Apex SM |
|------|----------------------------|---------------------------|---------|--------------------|
| 23 G | 11.06.23PIN | | | |
| 25 G | 11.06.25PIN | | | |
| | [STERILE, 5/BOX] | | | |

DUAL PURPOSE FORCEPS



Apte Corset

- Wide platform allows for removal of membranes in a single maneuver without traumatizing the retina
- Available in 23ga and 25ga

| | Pinnacle 360 SM | Syntrifugal SM | Premium | Apex SM |
|------|----------------------------|---------------------------|---------|--------------------|
| 23 G | 39.07.23PIN | | | |
| 25 G | 39.07.25PIN | | | |
| | [STERILE, 5/BOX] | | | |



MicroserratedSM Tewari Omnicep

- Fine enough for ILM work, but sturdy enough for ERM and PVR membranes
- Available in 23ga and 25ga

| | Pinnacle 360 SM | Syntrifugal SM | Premium | Apex SM |
|------|----------------------------|---------------------------|---------|--------------------|
| 23 G | 39.15.23PIN | D39.15.23 | | |
| 25 G | 39.15.25PIN | D39.15.25 | | |
| | [STERILE, 5/BOX] | [STERILE, 5/BOX] | | |

MYOPIC FORCEPS 37mm working length



Fine Tip Eckardt

- Thinner tip than standard Eckardt provides better view and positioning with similar grasping characteristics
- 37mm working length
- Available in 23ga and 25ga

| | Pinnacle 360 SM | Syntrifugal SM | Premium | Apex SM |
|------|----------------------------|---------------------------|---------|--------------------|
| 23 G | 09.10.23PIN-M | | | |
| 25 G | 09.10.25PIN-M | | | |
| | [STERILE, 5/BOX] | | | |



MicroserratedSM Tewari Omnicep

- MicroserratedSM Tewari Omnicep
- Fine enough for ILM work, but sturdy enough for ERM and PVR membranes
- 37mm working length

| | Pinnacle 360 SM | Syntrifugal SM | Premium | Apex SM |
|------|----------------------------|---------------------------|---------|--------------------|
| 23 G | 39.15.23PIN-M | | | |
| 25 G | 39.15.25PIN-M | | | |
| | [STERILE, 5/BOX] | | | |

FOREIGN BODY



Joseph/Meredith BB Removal

- Specifically designed for grasping all standard BBs without slippage up to 4.5 mm
- Available in 18ga

| | Pinnacle 360 ^o ™ | Syntrifugal™ | Premium | Apex™ |
|-----|-----------------------------|--------------|---------|-------|
| 18G | 11.40PIN | | 11.40 | |
| | [STERILE, 5/BOX] | | [1/BOX] | |



Forceps

- Jaws excellent for grasping large, irregularly shaped foreign bodies
- Available in 19ga

| | Pinnacle 360 ^o ™ | Syntrifugal™ | Premium | Apex™ |
|-----|-----------------------------|--------------|---------|-------|
| 19G | 11.20PIN | | 11.20 | |
| | [STERILE, 5/BOX] | | [1/BOX] | |



Magnet

- Designed for removal of iron or steel foreign bodies
- Available in 18ga

| | Pinnacle 360 ^o ™ | Syntrifugal™ | Premium | Apex™ |
|-----|-----------------------------|--------------|---------|-------|
| 18G | 12.21PIN | | 12.21 | |
| | [STERILE, 5/BOX] | | [1/BOX] | |

PICK FORCEPS



Ducournau Serrated

- Unique tip provides pick/serrated jaw for superior membrane removal
- Available in 20ga

| | Pinnacle 360 ^o ™ | Syntrifugal™ | Premium | Apex™ |
|-----|-----------------------------|------------------|---------|-------|
| 20G | | D29.02 | | |
| | | [STERILE, 5/BOX] | | |



Pick

- Great gripping platform and superior functionality with integrated pick
- Available in 20ga, 23ga and 25ga

| | Pinnacle 360 ^o ™ | Syntrifugal™ | Premium | Apex™ |
|--------------|-----------------------------|--------------|----------|-----------|
| 23 G 25 G | 09.05.23PIN 09.05.25PIN | | 09.25.25 | 09.05.23A |
| | [STERILE, 5/BOX] | | [1/BOX] | [1/BOX] |

Instrumentation Instrumentation Instrumentation Instrumentation Instrumentation

SCISSORS



Horizontal Curved

- Curved back to minimize “heeling in” - safe on surface of retina
- Available in 20ga, 23ga and 25ga

| | Pinnacle 360 ^o ™ | Syntrifugal™ | Premium | Apex™ |
|-----|-----------------------------|------------------|---------|-------|
| 20G | 23.76PIN | D23.76 | | |
| 23G | 23.76.23PIN | D23.76.23 | | |
| 25G | 23.76.25PIN | D23.76.25 | | |
| | [STERILE, 5/BOX] | [STERILE, 5/BOX] | | |



Horizontal Medium Curved

- Curved back to minimize “heeling in” - safe on surface of retina
- Available in 20ga, 23ga and 25ga

| | Pinnacle 360 ^o ™ | Syntrifugal™ | Premium | Apex™ |
|-----|-----------------------------|--------------|----------|-----------|
| 23G | | | 23.26.23 | 23.06.23A |
| | | | [1/BOX] | [1/BOX] |



Morris Vertical

- Curved heel minimizes inadvertent contact with retina and conforms to eye
- Available in 20ga, 23ga and 25ga

| | Pinnacle 360 ^o ™ | Syntrifugal™ | Premium | Apex™ |
|-----|-----------------------------|--------------|----------|-----------|
| 20G | 10.24PIN | | 10.24.23 | 10.04.23A |
| 23G | 10.24.23PIN | | | |
| 25G | 10.24.25PIN | | | |
| | [STERILE, 5/BOX] | | [1/BOX] | [1/BOX] |



Vertical

- Classic vertical scissors for segmentation of PDR and PVR membranes
- Available in Premium and Apex™ handle configurations
- Available in 20ga

| | Pinnacle 360 ^o ™ | Syntrifugal™ | Premium | Apex™ |
|-----|-----------------------------|--------------|---------|---------|
| 20G | | | | 10.01A |
| | | | | [1/BOX] |

SUBRETINAL INSTRUMENTS



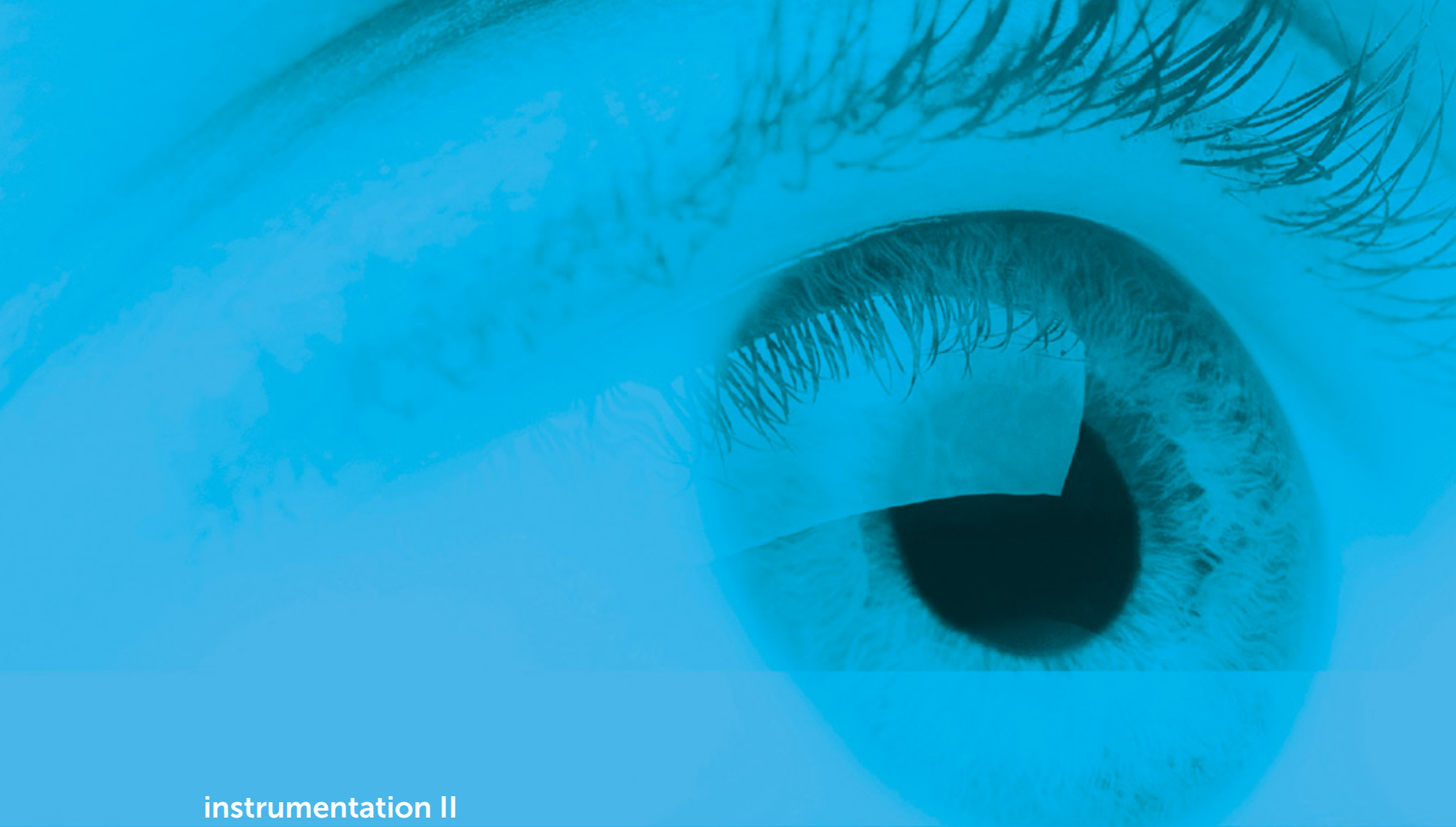
Thomas Horizontal Forceps

- Enhanced gripping with horizontal profile to minimize subretinal trauma
- Available in 20ga

| | Pinnacle 360 ^o ™ | Syntrifugal™ | Premium | Apex™ |
|-----|-----------------------------|--------------|---------|---------|
| 20G | | | 39.21 | 09.01A |
| | | | [1/BOX] | [1/BOX] |



Instrumentation II



instrumentation II
Quick Reference Guide

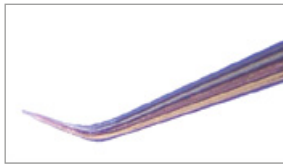
| | PRODUCTS | SIZE | REF |
|--|---|----------------------|----------------------------------|
| PICKS AND SPATULAS | Rice ILM Elevator 127° | 23G(42G) 25G(42G) | 20.02.23 20.02.25 |
| | Awh Serrated Pick 135° | 23G(30G) 25G(30G) | 20.41.23 20.41.25 |
| | Michels ´ Hook 90° | 20G(36G) | 28.21 |
| | Thomas Subretinal Perforator/Spatula 36G 131° | 20G(36G) | 20.01 |
| | Irrigating Trese Spatula (Disposable) | 23G(24G) | D28.30.23 |
| REUSABLE CANNULAS AND NEEDLES | Reflux Handle | | 31.00 |
| | Replacement Reflux Reservoir | | 31.02 |
| | Chang Perfluorocarbon Cannula | 20G(25G) | 08.01 |
| | Universal Soft Tip Needle (retractable) | 20G 23G | 30.10 30.10.23 |
| DISPOSABLE CANNULAS AND NEEDLES | Rigid Micro Injection Cannula, Straight | 20G(39G) 20G(42G) | 12.02 12.03 |
| | Rigid Micro Injection Cannula, Angled | 20G(39G) 20G(42G) | 12.12 12.13 |
| | De Juan/Awh Subretinal Injection | 25G(41G) | 12.03.25 |
| | Soft Tip Cannula | 23G 25G 27G | 30.08.23 30.08.25 30.08.27 |
| | Transconjunctival Chow Silicone Oil Injection Cannula | 25G | 30.80.25 |
| DISPOSABLE BLACKFUSH INSTRUMENTS | Universal Soft Tip Needle (retractable) | 20G 23G | D30.10 D30.10.23 |
| | Blunt Tip | 20G | D31.01 |
| | Soft Tip | 20G 23G 25G | D31.08 D31.08.23 D31.08.25 |
| PLUGS | Disposable Scleral Plug | 20G | 12.40 |
| | Tano | 20G 23G 25G | 20.04 20.04.23 20.04.25S |
| DDMSTM DIAMOND DUSTED MEMBRANE SCRAPER | Siff Tano | 20G | 20.07 |
| | Retactable Tano | 20G 23G 25G | 20.16 20.16.23 20.16.25 |
| | Adjustable Tano with Pick | 20G | 20.18 |
| | 6mm Tip | 20G 23G 25G | 30.32 30.32.23 30.32.25 |
| DISPOSABLE INFUSION CANNULAS | Bipolar Cautery | 23G 25G | 53.00.23 53.00.25 |
| | Reusable | | 40.01-2 40.01-6 |
| IRIS RETRACTORS | Disposable | | 40.02-2 40.02-6 |
| | Hubbard Visco Dissector | | 12.06.25 |

| | PRODUCTS | SIZE | REF |
|---------------------------|--|-------------------|---|
| PEDIATRIC INSTRUMENTATION | Infusing Insstrumen Cannula System | 20/23G | 58.2023-3MM |
| | 2 Port Vitrectomy High Flow Irrigating Endoilluminator | 20G | 56.14 |
| | Irrigating Trese Spatula | 23G | D28.30.23 |
| | Vertical Scissors | 23G | 10.24.23PIN |
| DISPOSABLE LENSES | Flat | | VDF |
| | Magnifying | | VMD |
| | 30° Prism | | V30PD |
| | DISPOSABLE WIDE FIELD VITRECTO | | SDLW |
| | Awh Sutureless Lens Rings | | 41.00 |
| REUSABLE LENSES | MINIQUAD ACS | | SVMQVITACS |
| | MINIQUAD | | SVMQVIT |
| | MINIQUAD XL | | SVMQXLVIT |
| | CENTRAL RETINAL SSV | | SVCRLVITSSV |
| | QUADR ASPHERIC CONTACT SLIT LA | | SVQFL |
| | LANDERS WIDE FIELD VITRECTOMY | | OLIV-WF |
| | 20D LARGE CLEAR BINOCULAR LENS | | SV20LC |
| PORT ENTRY SYSTEM | Stealth Port Entry System | 23G 25G | 58.23STH 58.25STH |
| | Valved Stealth Port Entry System | 23G 25G | 58.23STHV 58.25STHV |
| | One-Step™ Port Entry System | 20G 20G 23G | 58.20 (6x3 UDS) 58.20-6 (6x1 UDS) 58.23 |
| | Valved One-Step™ Port Entry System | 20G | 58.20V |
| | One-Step™ Port Entry System, Stainless | 23G 25G 27G | 58.23S 58.25S 58.27S |
| | Valved One-Step™ Port Entry System, Stainless | 23G 25G 27G | 58.23SV 58.25SV 58.27SV |
| | Disposable MVR Blade | 20G 23G | 58.00.20 58.00.23 |
| ACCESSORIES | IV Standard Gravity Administration Set | | 17570 |
| | ADJUSTABLE GAS PRESSURED INFUS | | 17565-10EA |
| | Extrusion Tubing Set | | 17580 |
| | Viscous Fluid Ijection Pack | | 19020 |
| | Silicone oil Collection Chamber | | 30.90 |

I-PACK™

| PRODUCTS | SIZE | REF |
|------------|------|-------|
| Components | | 18060 |
| Components | | 18061 |
| Components | | 18063 |
| Components | | 18064 |
| Components | | 18067 |
| Components | | 18069 |

REUSABLE PICKS AND SPATULAS



Rice ILM Elevator 127°

- 42ga
- .10mm at tip

| | REF |
|-----------|----------|
| 23G (42G) | 20.02.23 |
| 25G (42G) | 20.02.25 |



Awh Serrated Pick 135°

- 30ga
- .30mm at tip

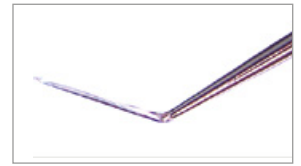
| | REF |
|-----------|----------|
| 23G (30G) | 20.41.23 |
| 25G (30G) | 20.41.25 |



Michels' Hook 90°

- 36ga
- .20mm at tip

| | REF |
|-----------|-------|
| 20G (36G) | 28.21 |



Thomas Subretinal Perforator/Spatula 36G 131°

- 36ga
- 10mm at distal tip
- Available in 20ga

| | REF |
|-----------|-------|
| 20G (36G) | 20.01 |

DISPOSABLE SPATULA



Irrigating Trese Spatula

- Cannula compatible design allows for dissection without the need for scleral sutures
- Glare free finish
- Standard luer lock connection
- Sterile, single use, 6/Box
- Available in 23ga

| | REF |
|-----------|-----------|
| 23G (42G) | D28.30.23 |

REUSABLE CANNULAS AND NEEDLES



Reflux Handle

| |
|-------|
| REF |
| 31.00 |



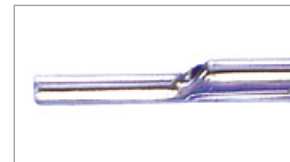
Replacement Reflux Reservoir

- 10/box

| |
|-------|
| REF |
| 31.02 |



White Autoclavable Handle



Chang Perfluorocarbon Cannula

- 25ga
- .50mm tip

| | |
|------------|-------|
| | REF |
| 20 G (25G) | 08.01 |



Autoclavable Handle with Slide



Universal Soft Tip Needle

- 6/box
- retractable

| | |
|-----|----------|
| | REF |
| 20G | 30.10 |
| 23G | 30.10.23 |

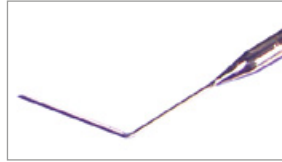
DISPOSABLE CANNULAS AND NEEDLES



Rigid Micro Injection Cannula, Straight

- .10mm at tip
- Black, disposable handle
- 5/box

| | REF |
|-----------|-------|
| 20G (39G) | 12.02 |
| 20G (42G) | 12.03 |



Rigid Micro Injection Cannula, Angled

- .10mm at tip
- Black, disposable handle
- 5/box

| | REF |
|-----------|-------|
| 20G (39G) | 12.12 |
| 20G (42G) | 12.13 |



De Juan/Awh Subretinal Injection

- 41ga tip
- .10mm at tip
- 5/box

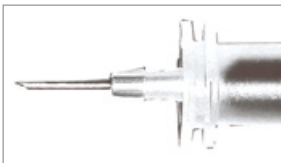
| | REF |
|-----------|----------|
| 25G (41G) | 12.03.25 |



Soft Tip Cannula

- 6/box

| | REF |
|-----|----------|
| 23G | 30.08.23 |
| 25G | 30.08.25 |
| 27G | 30.08.27 |



Transconjunctival Chow Silicone Oil Injection Cannula

- 6/box

| | REF |
|-----|----------|
| 25G | 30.80.25 |



Universal Soft Tip Needle

- 6/box
- retractable

| | REF |
|-----|-----------|
| 20G | D30.10 |
| 23G | D30.10.23 |

DISPOSABLE BACKFLUSH INSTRUMENTS



Disposable Backflush Handle



Blunt Tip

• 5/box

| | REF |
|-----|--------|
| 20G | D31.01 |



Soft Tip

• 5/box

| | REF |
|-----|-----------|
| 20G | D31.08 |
| 23G | D31.08.23 |
| 25G | D31.08.25 |

PLUGS



Disposable Scleral Plug

| | REF |
|-----|-------|
| 20G | 12.40 |

DDMS™ Diamond Dusted Membrane Scrapers



Tano

• 5/Box

| | REF |
|-----|-----------|
| 20G | 20.04 |
| 23G | 20.04.23 |
| 25G | 20.04.25S |



Stiff Tano

• 5/Box

| | REF |
|-----|-------|
| 20G | 20.07 |



Retractable Tano

• 20ga — 3/Box
• 20ga and 25ga — 5/Box

| | REF |
|-----|----------|
| 20G | 20.16 |
| 23G | 20.16.23 |
| 25G | 20.16.25 |



Adjustable Tano with Pick

• 3/Box

| | REF |
|-----|-------|
| 20G | 20.18 |

DISPOSABLE INFUSION CANNULAS



6mm Tip

- Ideal aphakic length
- Sterile, 5/box

| | REF |
|-----|-------|
| 20G | 30.32 |



6mm Tip

- For severe vitreous hemorrhaging
- For use with Synergetics® steel cannula sets (sold separately)
- Sterile, 6/box

| | REF |
|-----|----------|
| 23G | 30.32.23 |
| 25G | 30.32.25 |

BIPOLAR [STERILE, 6/BOX]



Bipolar Cautery

| | REF |
|-----|----------|
| 23G | 53.00.23 |
| 25G | 53.00.25 |

IRIS RETRACTORS



Reusable

- 5 retractors/set in case one is lost or damaged
- Autoclavable up to 3 uses
- Available in 2 or 6/box configurations

| REF |
|---------|
| 40.01-2 |
| 40.01-6 |



Disposable

- 5 retractors/set in case one is lost or damaged
- Sterile, 2/box or Sterile, 6/box configurations

| REF |
|---------|
| 40.02-2 |
| 40.02-6 |

VISCO DISSECTOR



Hubbard Visco Dissector

- Injects viscoelastic for delaminating large membranes from the retina
- Available in 25ga (28ga tip)
- Sterile, 6/Box

| | REF |
|-----|----------|
| 25G | 12.06.25 |

DISPOSABLE LENSES [STERILE, 10/BOX]



Flat

- Field of view: 36°
- Image magnification: 1.0x

| |
|------|
| REF |
| VFD |
| SDLF |



Magnifying

- Field of view: 30°
- Image magnification: 1.5x

| |
|------|
| REF |
| VMD |
| SDLM |



30° Prism

- Field of view: 33° (offset 30°)
- Image magnification: 1.0x

| |
|-------|
| REF |
| V30PD |
| SDL3P |



Disposable Widefield Vitrecto

| |
|------|
| REF |
| SDLW |



Awh Sutureless Lens Ring

- Used to stabilize a vitrectomy lens
- 3 sizes/pack
- Sterile, 10/Box

| | |
|------|-------|
| | REF |
| VOLK | 41.00 |

REUSABLE LENSES



Miniquad ACS

| | |
|------|------------|
| | REF |
| VOLK | SVMQVITACS |



Miniquad

| | |
|------|---------|
| | REF |
| VOLK | SVMQVIT |



Miniquad XL

| | |
|------|-----------|
| | REF |
| VOLK | SVMQXLVIT |



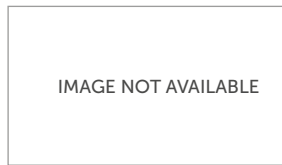
Central Retinal SSV

| | |
|------|-------------|
| | REF |
| VOLK | SVCRLVITSSV |



Quadr Aspheric Contact SLIT LA

| | |
|--|-------|
| | REF |
| | SVQFL |



Landers Widefield Vitrectomy

| | |
|-----------|---------|
| | REF |
| OCULARINC | OLIV-WF |



20D Large Clear Binocular Lens

| | |
|--|--------|
| | REF |
| | SV20LC |

PEDIATRIC INSTRUMENTATION



Infusing Instrument Cannulas

- 3mm shaft length
- Stainless steel cannulas
- Allows for two port PPV via 20ga sclerotomy and 23ga instrumentation
- [STERILE, 6/BOX]

| | |
|---------|-------------|
| | REF |
| 20G/23G | 58.2023-3MM |



2-Port Vitrectomy High-Flow Irrigating Endoilluminator

- Widefield illumination
- Available in non-PHOTON™ configuration
- Sterile, 12/Box
- Available in 20ga

| | |
|-----|-------|
| | REF |
| 20G | 56.14 |



Irrigating Trese Spatula

- Cannula compatible design allows for dissection without the need for scleral sutures
- Glare free finish
- Standard luer lock connection
- Sterile, single use, 6/Box
- Available in 23ga

| | |
|-----|-----------|
| | REF |
| 23G | D28.30.23 |



Vertical SCISSORS

- Curved heel minimizes inadvertent contact with retina and conforms to eye
- Available in disposable Pinnacle 360™ handle configuration
- Available in 23ga

| | |
|-----|-------------|
| | REF |
| 23G | 10.24.23PIN |



Port Entry Systems

Synergetics® offers the industry's most extensive line of port entry systems. With two distinct blade choices: One-Step™ and Stealth, Synergetics® gives the surgeon the power of choice. All Synergetics® port entry systems are packaged with three (3) preloaded trocar/cannulas, a high flow infusion line and color coded plugs.

Cannulas are offered in stainless steel or polyimide and feature a unique funnel design. Synergetics® is the only company to offer the surgeon both a valve cap design and an embedded valve design. Both offer a great seal without instruments in the eye, as well as minimal instrument drag.

PORT ENTRY SYSTEM



Stealth Port Entry System

- Available in 23ga and 25ga
- Stainless steel cannulas

| | REF |
|-----|----------|
| 23G | 58.23STH |
| 25G | 58.25STH |



Valved Stealth Port Entry System

- Available in 23ga and 25ga
- Stainless steel cannulas with removable valve cap

| | REF |
|-----|-----------|
| 23G | 58.23STHV |
| 25G | 58.25STHV |



One-Step™ Port Entry System

- Available in 20ga, 23ga as 6 sets of 3
- Also available in 20ga and 23ga as 6 individual cannulas, plus blade
- Polyimide cannulas

| | REF |
|-----|-------------------|
| 20G | 58.20 (6X3 UDS) |
| | 58.20-6 (6X1 UDS) |
| 23G | 58.23 |



Valved One-Step™ Port Entry System

- Available in 20ga as 6 sets of 3
- Polyimide cannulas with built-in valve

| | REF |
|-----|--------|
| 20G | 58.20W |

PORT ENTRY SYSTEM



One-Step™ Port Entry System, Stainless

- Available in 23ga, 25ga and 27ga as 6 sets of 3
- Stainless steel cannulas

| | REF |
|-----|--------|
| 23G | 58.23S |
| 25G | 58.25S |
| 27G | 58.27S |



Valved One-Step™ Port Entry System, Stainless

- Available in 23ga and 25ga as 6 sets of 3
- Stainless steel cannulas with removable valve cap

| | REF |
|-----|---------|
| 23G | 58.23SV |
| 25G | 58.25SV |
| 27G | 58.27SV |

MVR BLADES [STERILE, 6/BOX]



Disposable MVR Blade

- Available in 20ga and 23ga

| | REF |
|-----|----------|
| 20G | 58.00.20 |
| 23G | 58.00.23 |

All Port Entry Systems available in sterile, 6/box.

VITRECTOMY ACCESSORIES



IV Standard Gravity Administration Set

- 6/Box

| |
|-------|
| REF |
| 17570 |



Adjustable Gas-Pressurized Infusion Tubing Set

- Includes 1 prespike and 2 stopcocks
- 6/Box

| |
|----------|
| REF |
| 17565-10 |



Extrusion Tubing Set

- 6/Box

| |
|-------|
| REF |
| 17580 |



Viscous Fluid Injection Pack

- Provides the surgeon the consumables necessary to perform viscous fluid injection: syringe, plunger rod, piston, syringe tip cap, injection airline and VFI cannulas (20ga, 23ga and 25ga)
- For use with Synergetics® VFI System
- Sterile, 6/Box

| |
|-------|
| REF |
| 19020 |



Silicone Oil Collection Chamber

- Silicone tip allows for removal of 1000-5000 cSt silicone oil through an existing instrument cannula
- Extrusion controlled via foot pedal
- 15mL collection chamber volume
- Sterile, 6/Box

| |
|-------|
| REF |
| 30.90 |